



Creating Translations for Data Collections

Business Practice



Table of Content

Creating Translations for Data Collections	1
Introduction	1
Description	1
Purpose.....	1
Target Audience	1
More Information and Support	1
Resources	1
EDI Verification Label Validation (STVXLBL)	2
Translation Label Codes.....	2
EDI Cross-Reference Rules Page (SOAXREF).....	4
Cross-Reference Rules	4...



Creating Translations for Data Collections

Introduction







EDI Cross-Reference Rules Page (SOAXREF)

Cross-Reference Rules

Use the EDI Cross-Reference Rules Page (SOAXREF) to translate the EDI value to the Banner value. For data collections, this page establishes the translation of institutional Banner values to standard Regents values.

EDI Value	Electronic Label	Electronic Value	Banner Value
JR	JR	Junior	RGTCLAS
SO	SO	Sophomore	RGTCLAS
SR	SR	Senior	RGTCLAS

The **Electronic Label** field contains the labels previously entered on the EDI Verification Label Validation Page (STVXLBL).

The **Electronic Value** field contains the Regents value for the translation. These codes are listed in the Valid Values Sections of the DED and/or the Cognos Reference Code Reports.

The **EDI indicator** denotes codes that are used by electronic data exchange (EDI) processes for transmitting data.

The **Web indicator** is used for codes that will display on the Self-Service Banner webpages. The Web indicator is not used for data collection.

The **XML indicator** should be checked for PESC/XML standard codes. These are items such as the Postsecondary XML Transcript that uses a standard established by the Postsecondary Electronics Standards Council (PESC) to transmit data via XML. The XML indicator is not used for data collection.

The **Banner Value** field contains the institutional value for the translation for codes in use at the institution. The Description field contains a brief description of the translation. Use a variation of the element title listed in the DED for easier reference.

You must use the Electronic Qualifier when your institution has more than one institutional Banner value for the same EDI Value/Regents value. Use a qualifier when you need a many-to-one translation.



For example, the Electronic Label RGTRSTS and Banner Values CC, DC, DW and DD map to Electronic Value CNTENRLN. The numeric qualifiers 1, 2, 3 and 4 are used to map all four institutional values to the Regents EDI Value of CNTENRLN. Qualifiers may be any alphanumeric value (i.e., A, B, C and D or N1, N2, N3 and N4) as long as a unique qualifier is used for each Banner value.

NOTE: Multiple Banner Values may be cross-referenced to a single Electronic Value, but a single Banner Value may not be cross-referenced to multiple Electronic Values.

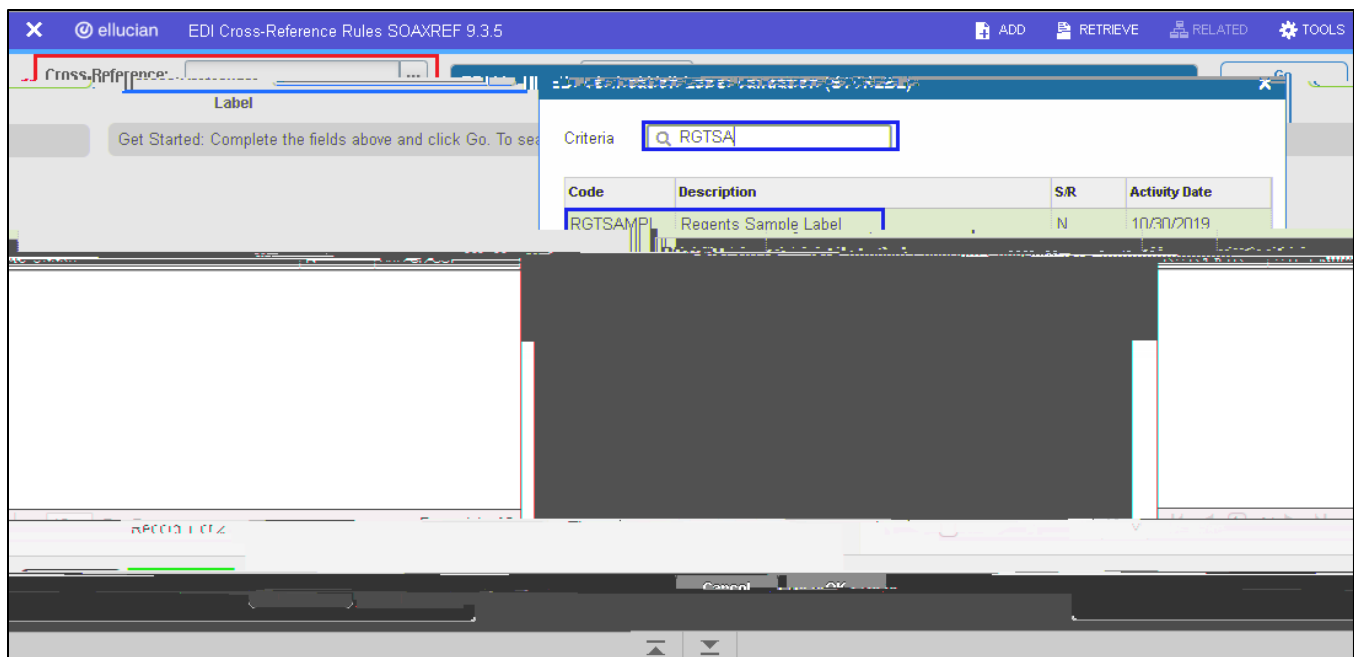


Procedural Steps to Create EDI Translations

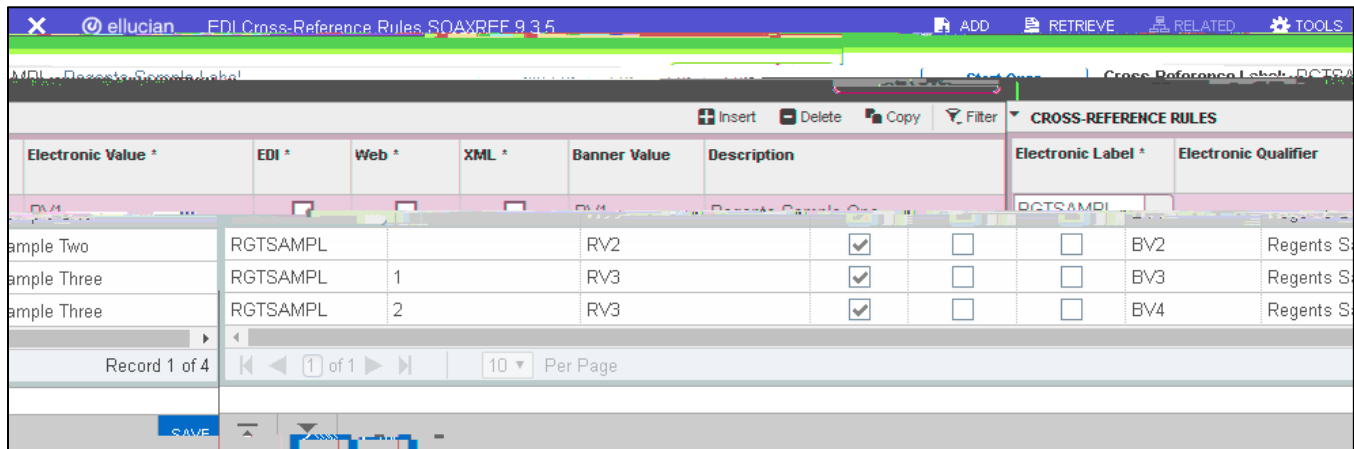
Set Up Valid EDI Codes on STVXLBL

To set up valid Regents codes in Banner, complete the following steps:

- en•



- The Cross-Reference Label field will be populated with the selected EDI Label code.
- Click Go.



- Enter the Regents value as listed in the DED Valid Values field.
- The EDI flag should be checked.
- Enter your institutional code in the Banner Value field.
- Enter the Description as listed in the DED Valid Values field.
- Use the Electronic Qualifier field when multiple institutional Banner codes map to one Regents code. In this example, Banner Values BV3 and BV4 are both mapped to Regents value RV3.
- Save the entries by clicking the SAVE button.



2. Manually replace the copied data with your new data (Code, Sequence, Group, External Code, Description). Leave the Sys field blank.
3. Save the record.

Email Crosswalks

Institutions may collect and use multiple student email address types including home email address, other email address, parent email address, etc. Email address types are defined on the E-mail Address Type Validation page (GTVEMAL). For data collection purposes, the Enrolled Student Current Email Address and Graduation Email Address types must be translated.

Translate Institutional Codes to Regents Codes on GTVSDAX

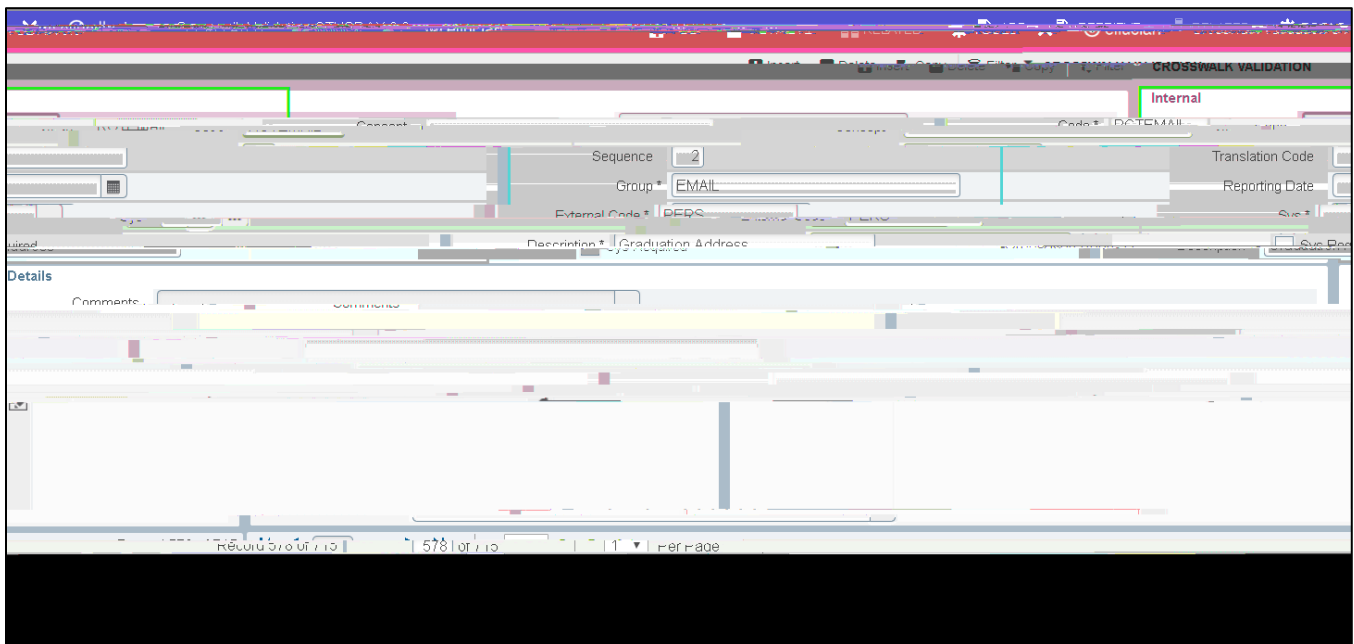
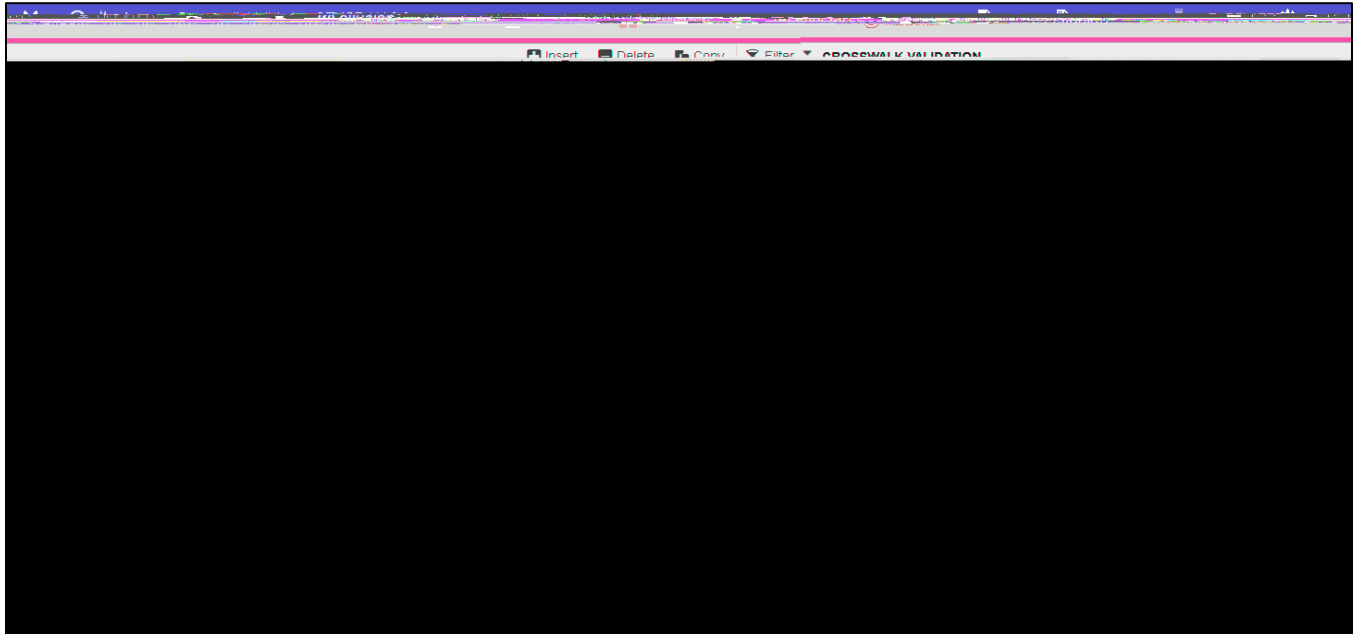
To establish the translation of institutional email address codes to Regents codes, complete the following steps:

- Create email address type validation codes on the E-mail Address Type Validation page (GTVEMAL).

- Establish the email address hierarchy on the Crosswalk Validation page (GTVSDAX 0.005()-8 (G)2d(Tj/T8 (C



For illustration purposes, if an institution collected two permanent addresses with email address type codes HOME and PERS, the following entries would be made:





Appendix A: SOAXREF Translation Labels

Academic Data Collection (ADC)		
Data Element Number	Data Element Name	SOAXREF Translation Label -
GEN002	Academic Term	RGTERM
SAD001	Program Admission Decision Code - Nursing - Application	RGTCHRT
SAD002	Program Admission Decision Code - Nursing - App Review	RGTCHRT
SAD003	Program Admission Decision Code - Nursing - Decision	RGTCHRT



STE028	Graduate/Professional Students' Degree Type at Previous Institution	RGTDEGC
STE031	High School Diploma or Equivalency Type	RGTDPLM
STE042	Learning Support Program Current Enrollment Indicator - English	RGTLS
STE043	Learning Support Current Enrollment Indicator - Math 1	RGTLS
STE048	Learning Support Requirement Indicator - English	RGTLS
STE049	Learning Support Requirement Indicator - Math 1	RGTLS
STE050	Learning Support Requirement Indicator - Reading	RGTLS



STR025	GED Test Score - New - Social Studies	RGTTTEST (Test Code)
STR026	GED Test Score - New - Science	RGTTTEST (Test Code)
STR027	GED Test Score - New - Language Arts/Reading	RGTTTEST (Test Code)
STR028	GED Test Score - New - Mathematics	RGTTTEST (Test Code)
STR029	GED Test Score - New - Total Score	RGTTTEST (Test Code)
STR030	GED Test Score - New - Average Standard Score	RGTTTEST (Test Code)
STR031	GED Test Score - Old - Writing Skills	RGTTTEST (Test Code)
STR032	GED Test Score - Old - Social Studies	RGTTTEST (Test Code)
STR033	GED Test Score - Old - Natural Science	RGTTTEST (Test Code)
STR034	GED Test Score - Old - Interpreting Literature and the Arts	RGTTTEST (Test Code)

STR035 GED Test Score - Old - More Im(P)2 0.004 (e)10.5 (a



STR114	ACT Craft and Structure Score (A27)	RGTTTEST (Test Code)
STR115	ACT Integration of Knowledge and Ideas Score (A28)	RGTTTEST (Test Code)
STR116	ACT Interpretation of Data Score (A29)	RGTTTEST (Test Code)
STR117	ACT Scientific Investigation Score (A30)	RGTTTEST (Test Code)
STR118	ACT Evaluation of Models, Inferences, and	
STR119		



STR161	TOIBTW TOEFL (ibt) Writing	RGTEST (Test Code)
STR162	TOPBTL TOEFL (pbt) Listening Comp	RGTEST (Test Code)



Appendix B: GTVSDAX Codes

Academic Data Collection (ADC)
Data es